



LAMP.

MARINE HARDWARE

by Sugatsune

No.345 catalogue





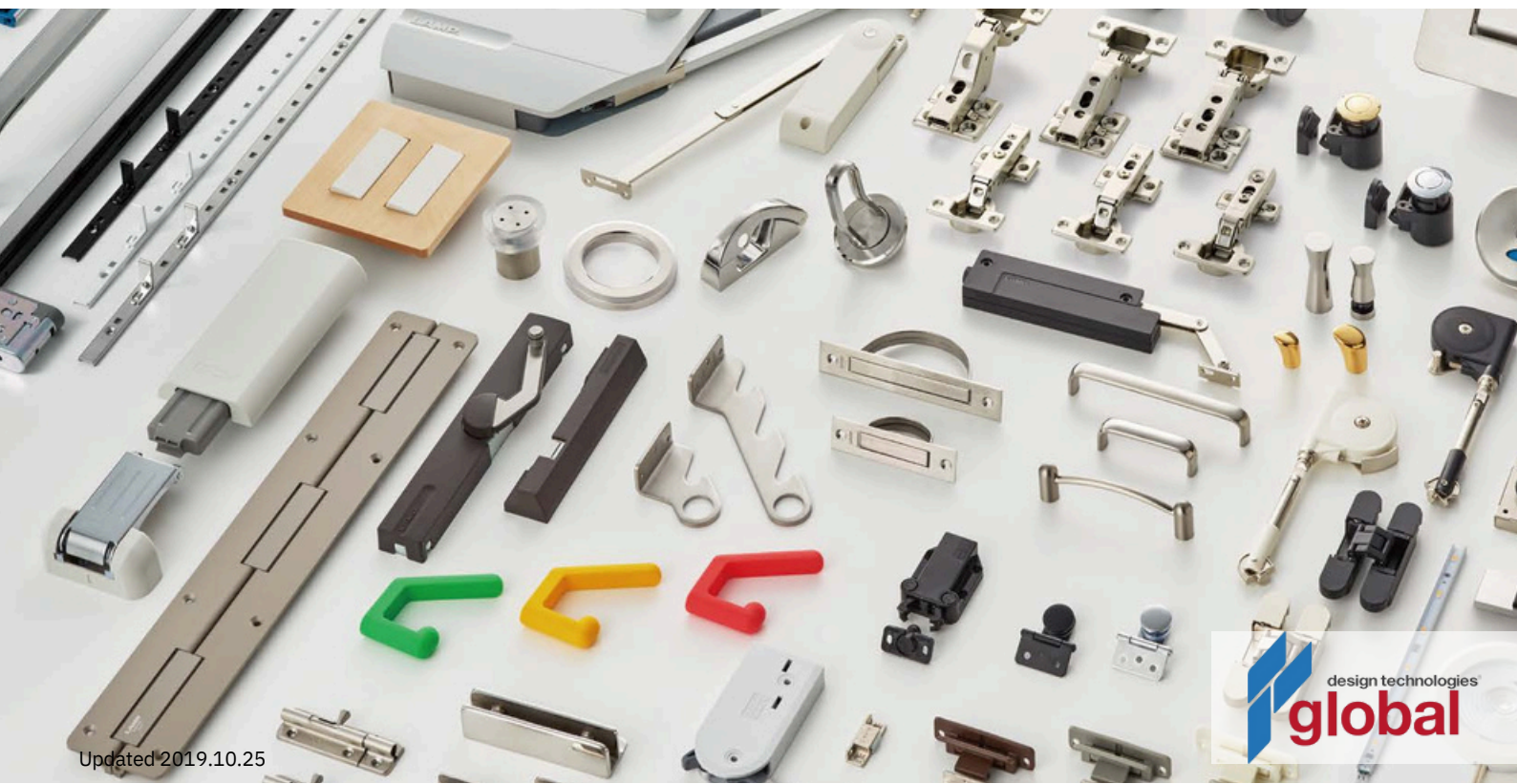
SUGATSUNE

Brand

Zwei L®

High precision polish, artfully sculpted shine.

Stainless steel surfaces polished to the smoothness of a mirror reflect their surroundings while the satin finish gently absorbs the colors, creating a playful harmony in diverse spaces whilst providing a stately radiance.



Marine...and more!

With over 20,000 products to choose from, Sugatsune can provide you with stainless steel components to ward off the harsh corrosion of sea water whilst still providing the highest quality hardware.

Whether it is being able to pivot and have constant torque, a hinge with a hole for rope attachment or any number of other industry specific concerns, our products are perfectly suited to marine environments. From Bow to stern, on deck and below; your customers and their guests will all notice the Sugatsune difference immediately!



Brand

LAMP®

High quality interior hardware.

‘Monozukuri’ is the Japanese passion for creation, in this spirit we have created a wide selection of internationally recognised products known for their quality, precision and imagination.

The “LAMP” logo is only used for products that ensure Sugatsune quality.

MULTI-PURPOSE LID
W/DAMPER [AD-GD]

SUS

SEALED MAGNETIC
CATCH [MC-JM45]STAINLESS STEEL
HANDLE [4LC]

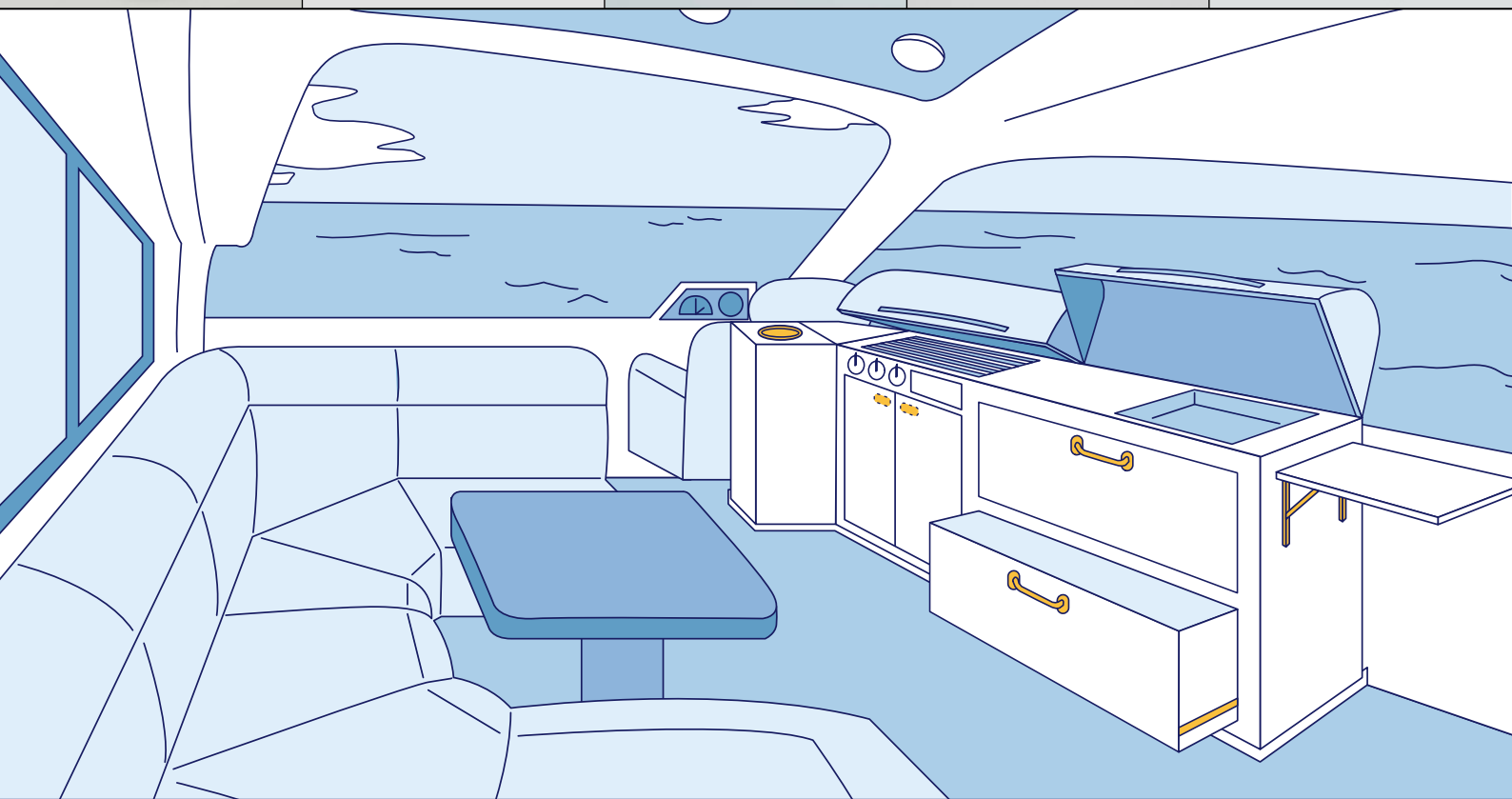
SUS316

FULL EXTENSION SOFT-
CLOSE SLIDE [ESR4670]

SUS

FOLDING BRACKET
[EB]

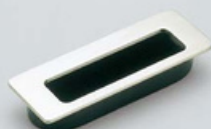
SUS

STAINLESS STEEL
HANDLE [FT-T]

SUS316

STAINLESS STEEL
RECESSED PULL [HH-K]

SUS316

HOOK
[EU]

SUS316

STAINLESS STEEL
LEVER LATCH [LL-66S]

SUS316

BUTT HINGE
[28500,28000]

SUS316



HEAVY DUTY CONCEALED HINGE [J95]



PUSH KNOB LATCH [DPL]



OUTLET PLATE [DMFH-EA]
USB CONNECTOR [DM1-USB]



GLASS DOOR HINGE [ZL-1703] **SUS316**



STAINLESS STEEL DOOR KNOB [ZL-1505] **SUS316**



GLASS HINGE [GS-GH5]



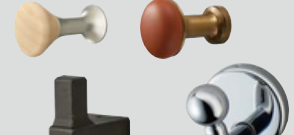
GLASS DOOR CAM LOCK [GS-GL5W]



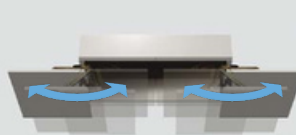
GLASS BRACKET [GS-GB5]



DECORATIVE HOOKS [PXB]



MONOFLAT LIN-X HINGE [LIN-X450]



HES CONCEALED HINGE SERIES



SOFT-DOWN STAY
[SDS-100,SDS-C100]



NON-MAGNETIC TOUCH LATCH [MC-37F]



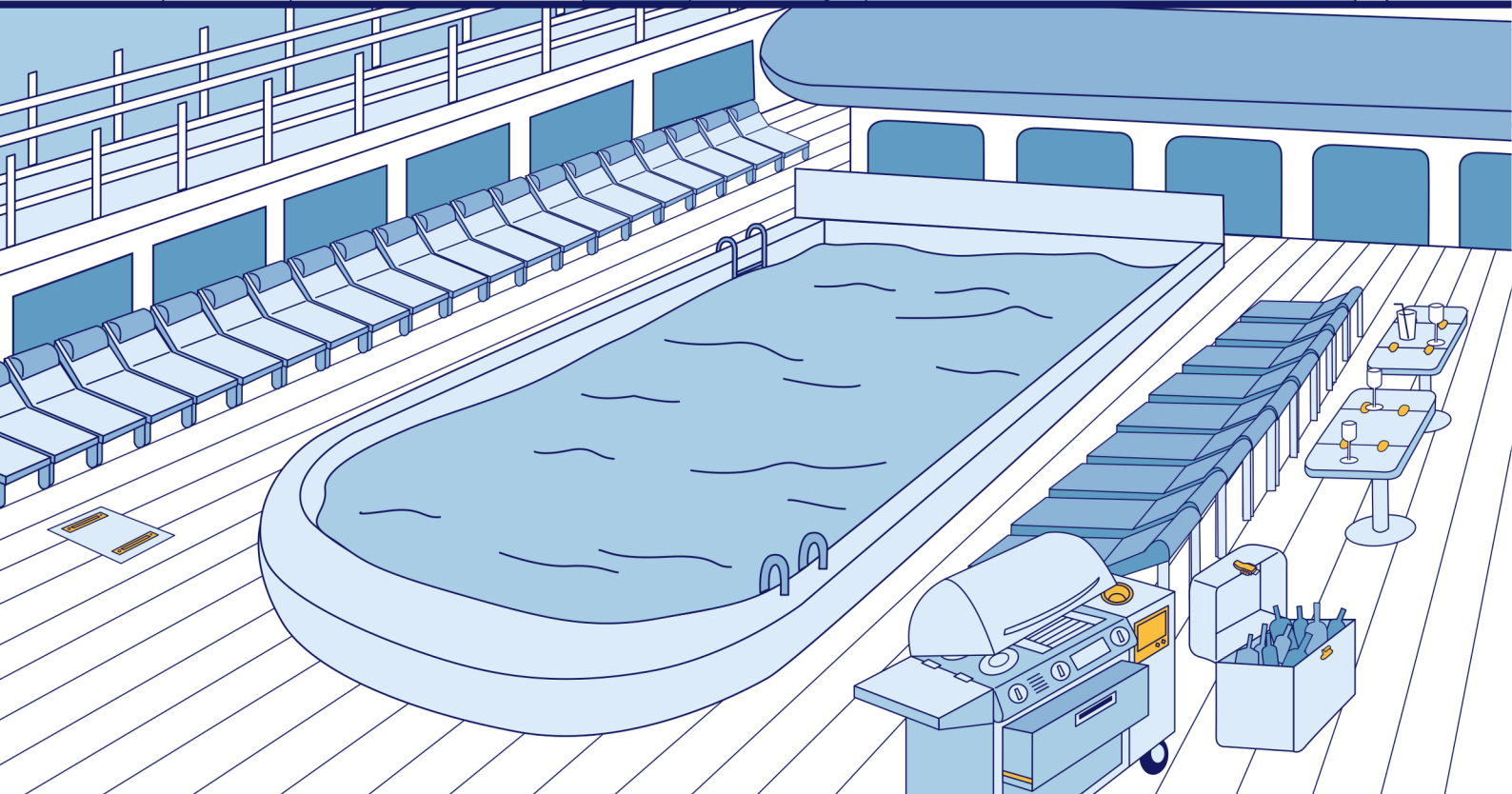
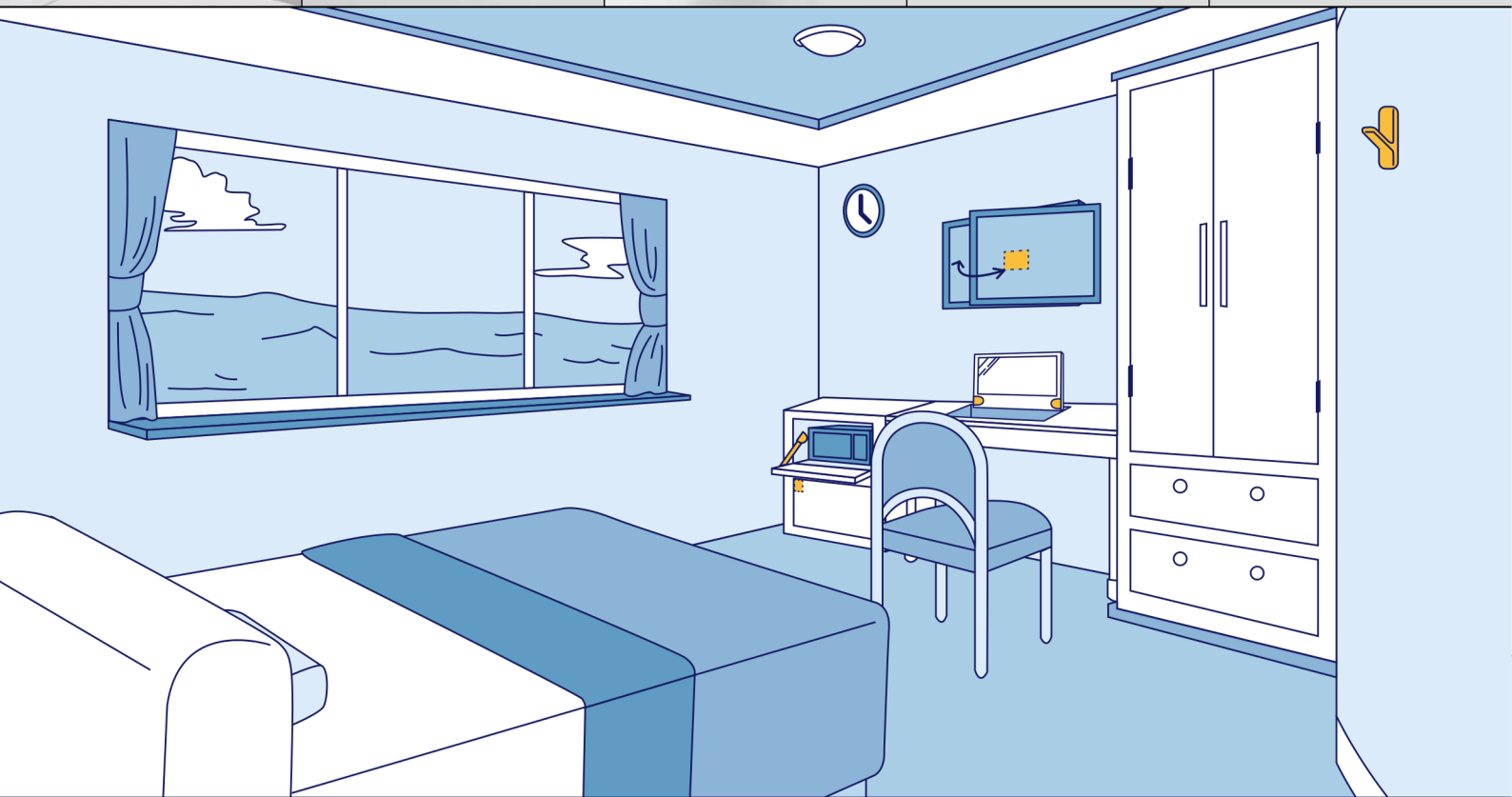
MONITOR BRACKET
[K A-T100S50]



DAMPER HINGE
[HG-JHM16]



RUBBER HOOKS
[PXB]



STAINLESS STEEL HATCH PULL [HR-RS] SUS



FULL EXTENSION SLIDE [ESR7] SUS



STAINLESS STEEL FUNNEL [AE-DH] SUS



MULTI-PURPOSE LIDS W/DAMPER[AZ-GD230L-HL] SUS



STAINLESS STEEL COMPRESSION DRAW LATCH [SCC-60] SUS



TABLETOP HINGE [MH-83S] SUS



TENSION CATCH [BCTS] **SUS316**



SPRING LOADED BARREL BOLT [BSS2, BSS3] **SUS**



BUTT HINGE [LSA, LSB] **SUS**



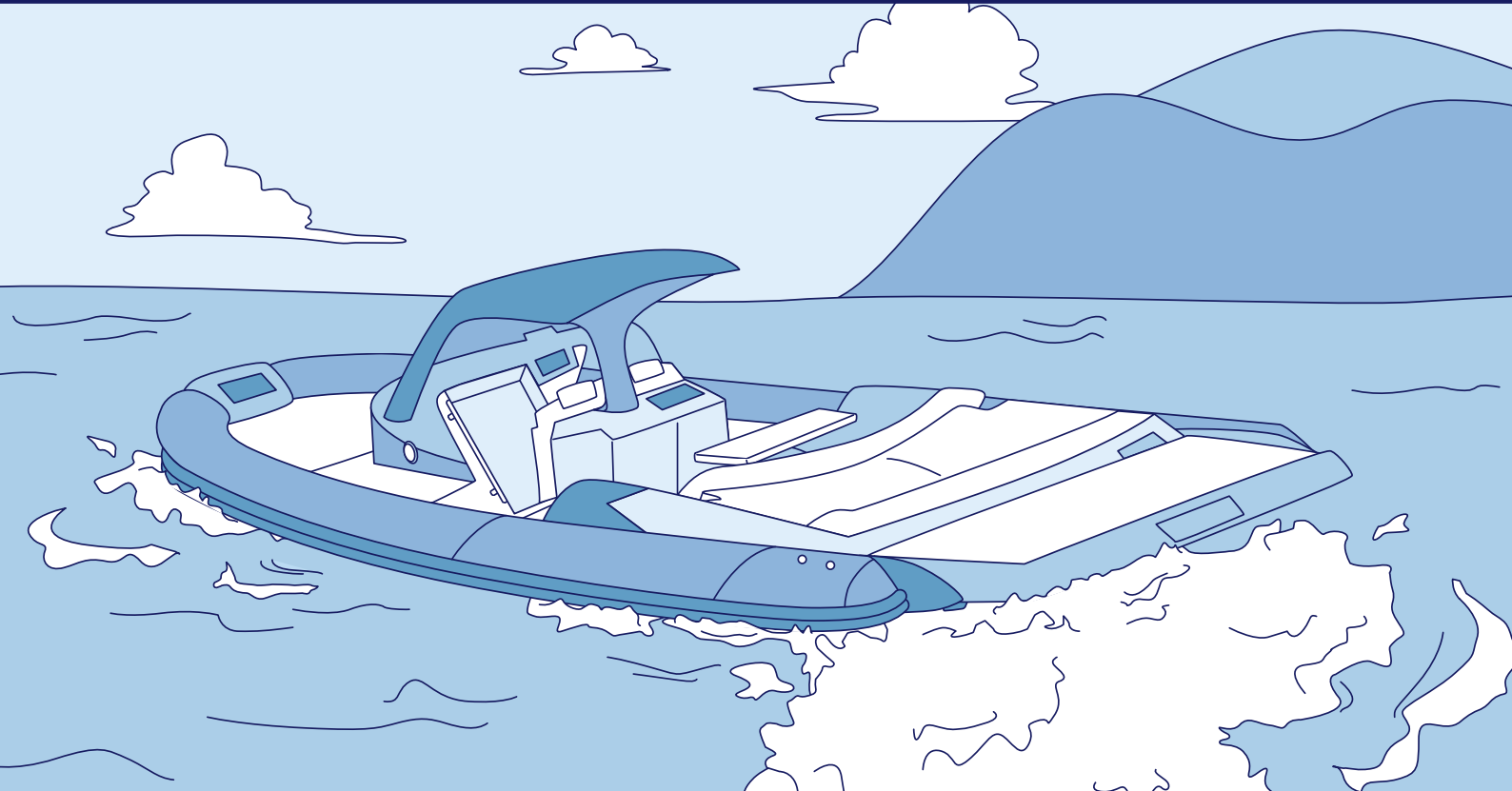
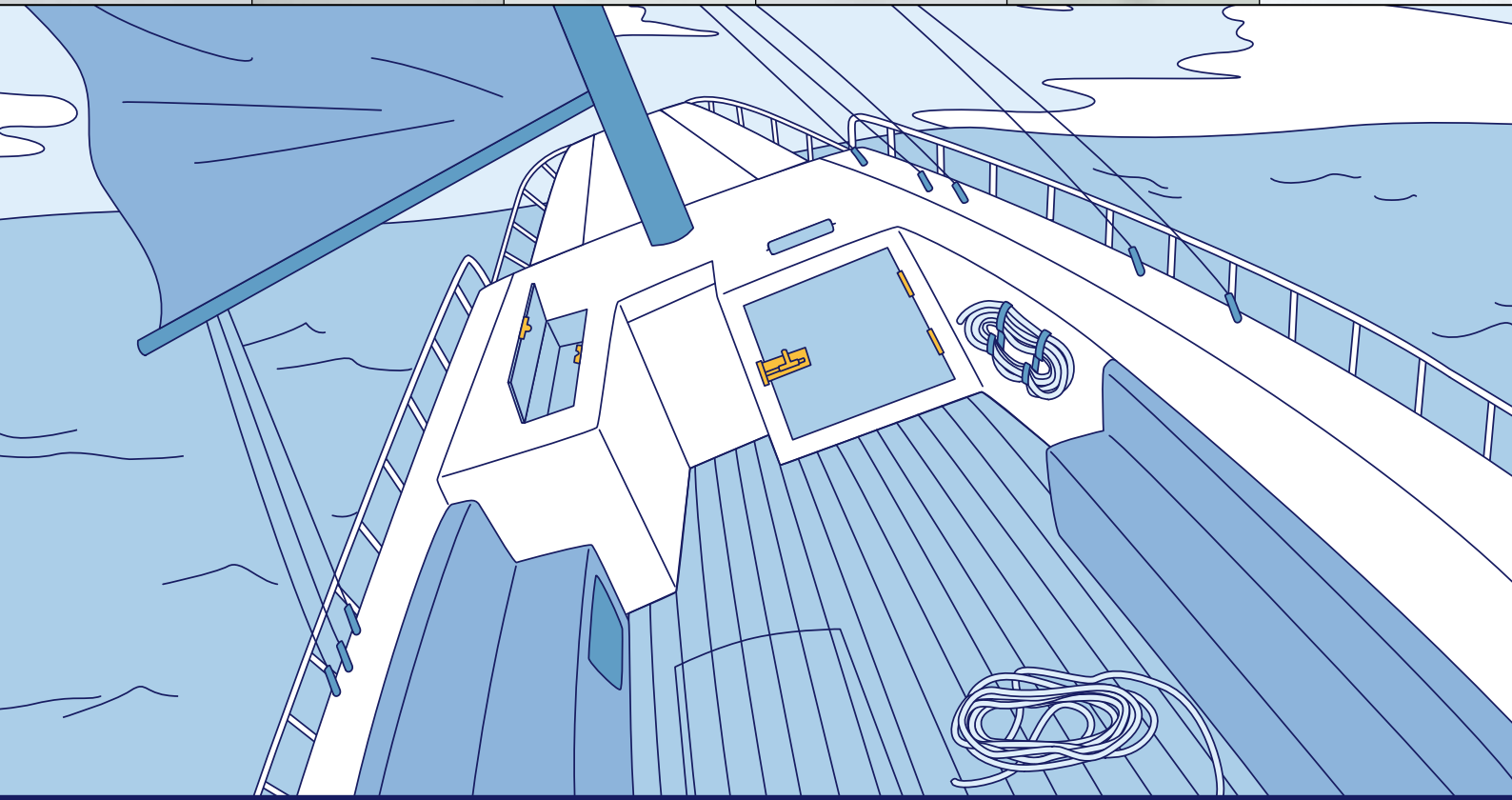
HEAVY DUTY FOLDING PAD EYE [EY-R] **SUS316**



LATCH HOOK [EN-R80] **SUS316**



VENTILATOR [SAD] **SUS**



FOLDING HANDLE [HK] **SUS**



STAINLESS STEEL RING PULL [26900] **SUS**



CONCEALED HINGE [LH00] **SUS**



PUSH KNOB LATCH [TLP-S] **SUS**



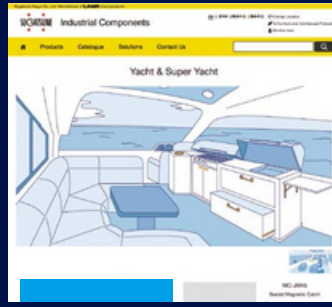
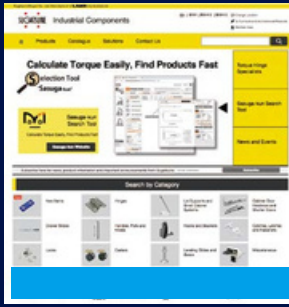
STAINLESS STEEL DRAW LATCH [PN-51] **SUS**



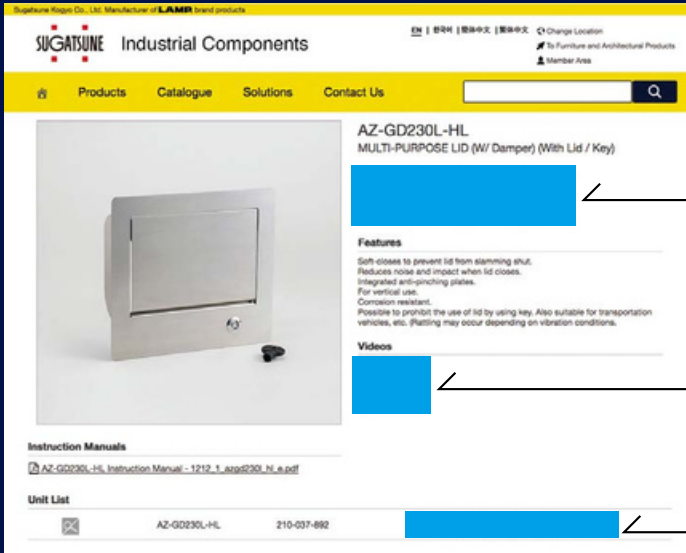
VENTILATOR [ASM] **SUS**



Website



<https://www.sugatsune-intl.com/>



Selection Tool

Find out fast what to order for your project.



<http://contents.sugatsune.co.jp/en/motion/selection/>

